



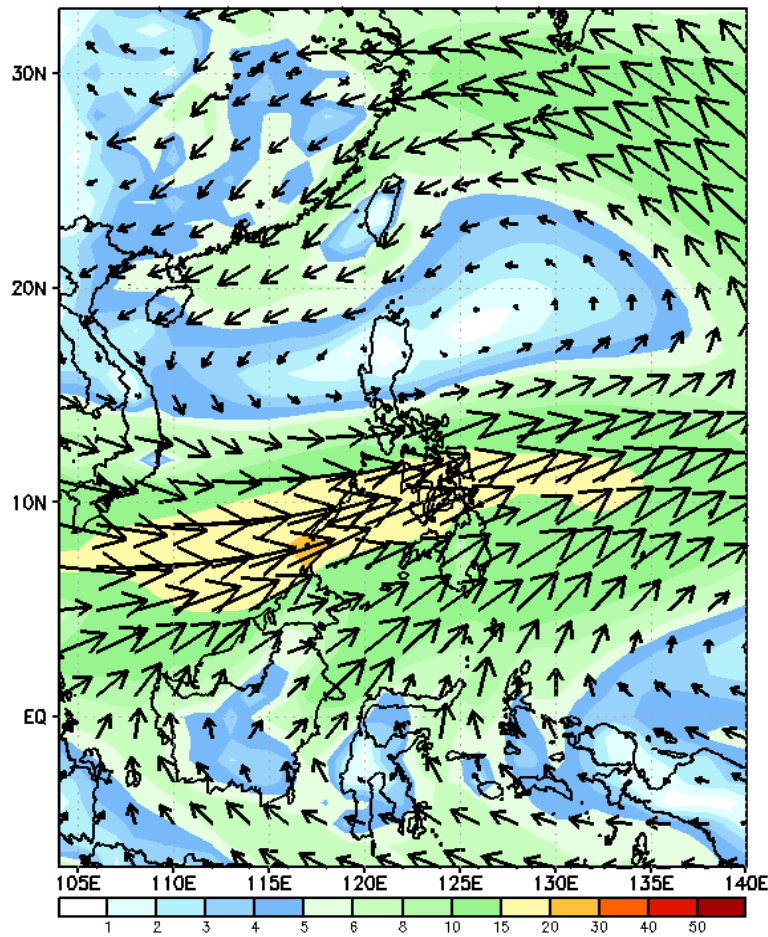
# Week 1 & Week 2 Forecast for the Philippines using GEFS Model



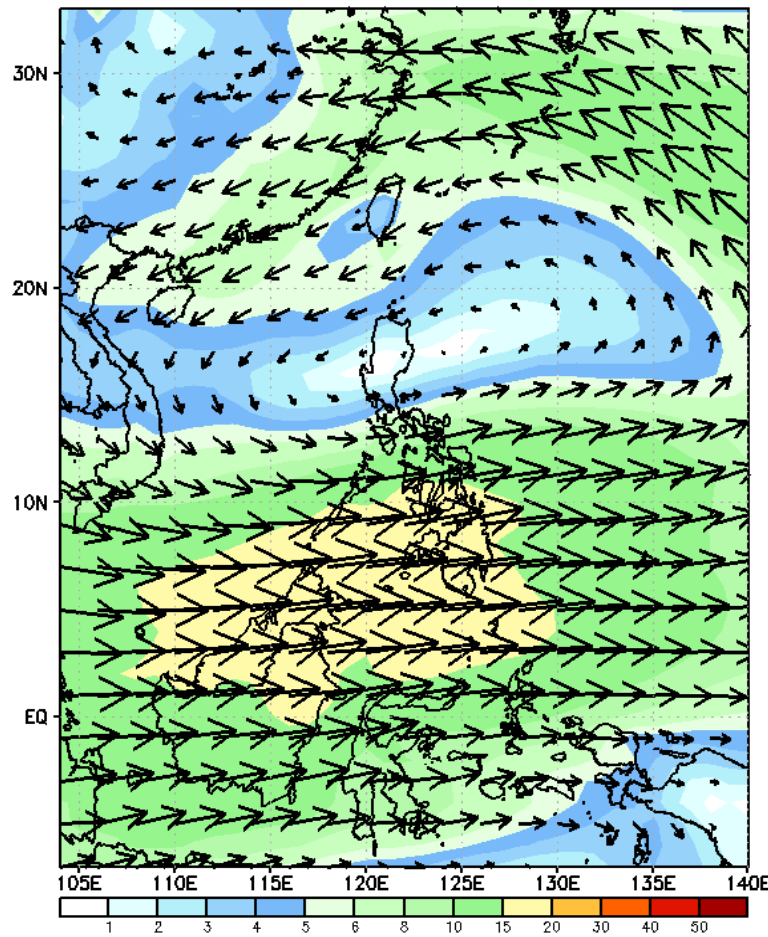
# GEFS Week-1 Wind Forecasts:

Week 1: Sep 13-19, 2024

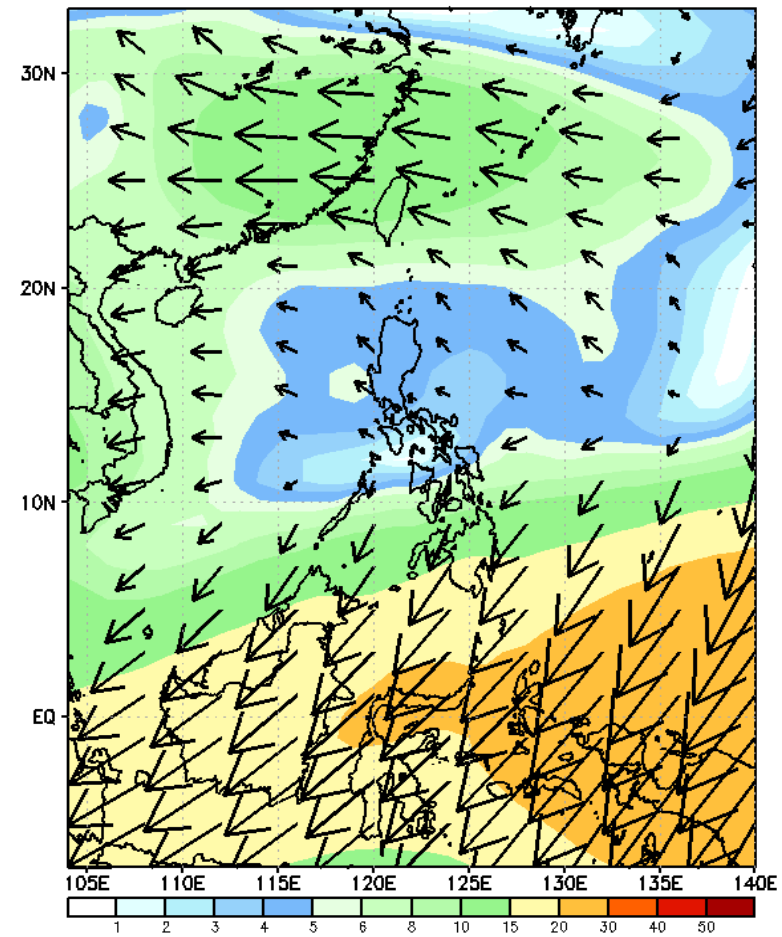
GEFS Week-1 850-hPa Wind Total  
Valid: 20240913 - 20240919



GEFS Week-1 700-hPa Wind Total  
Valid: 20240913 - 20240919

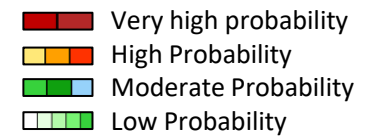


GEFS Week-1 200-hPa Wind Total  
Valid: 20240913 - 20240919



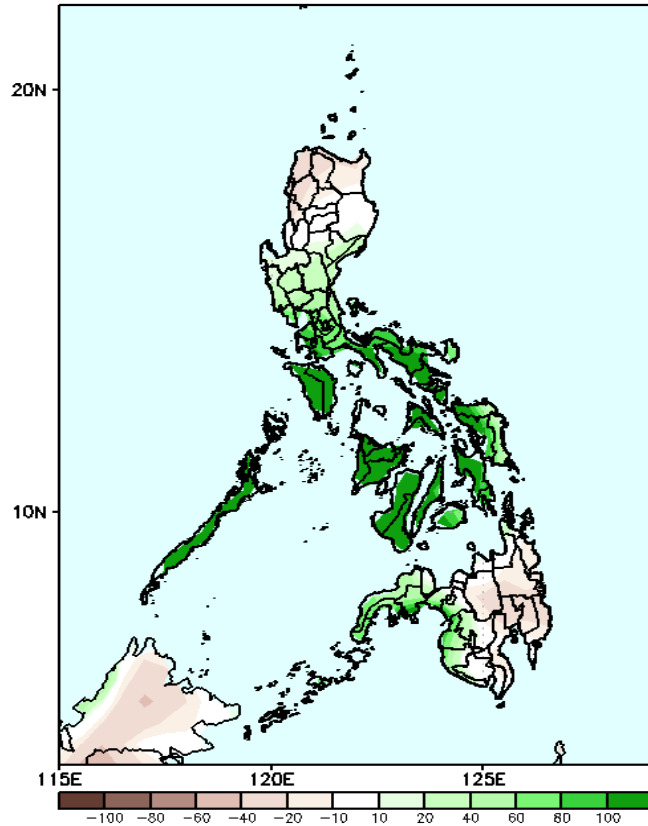
Southwest Monsoon affecting Southern Luzon, Visayas and Mindanao.

# Precipitation Anomaly and Exceedance Probability > 25/50 mm

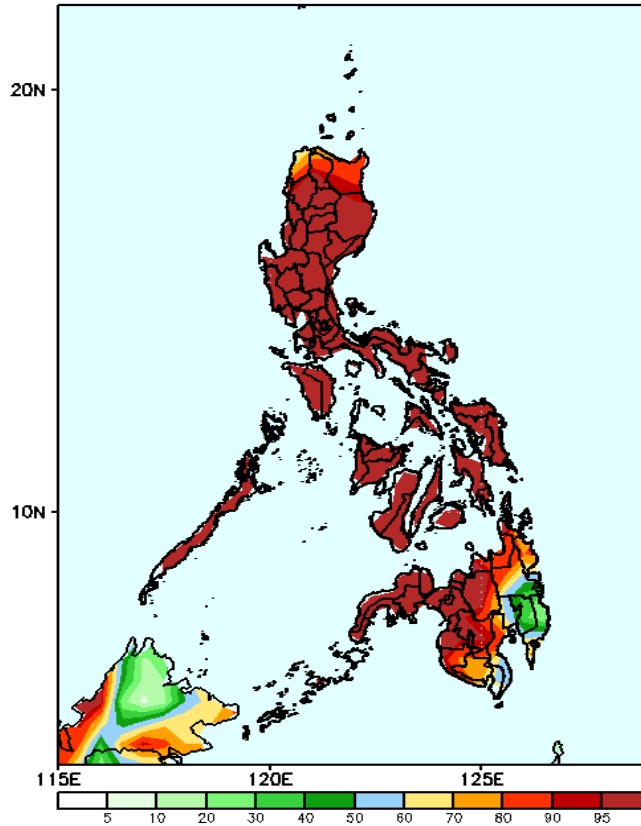


## Week 1: Sep 13-19, 2024

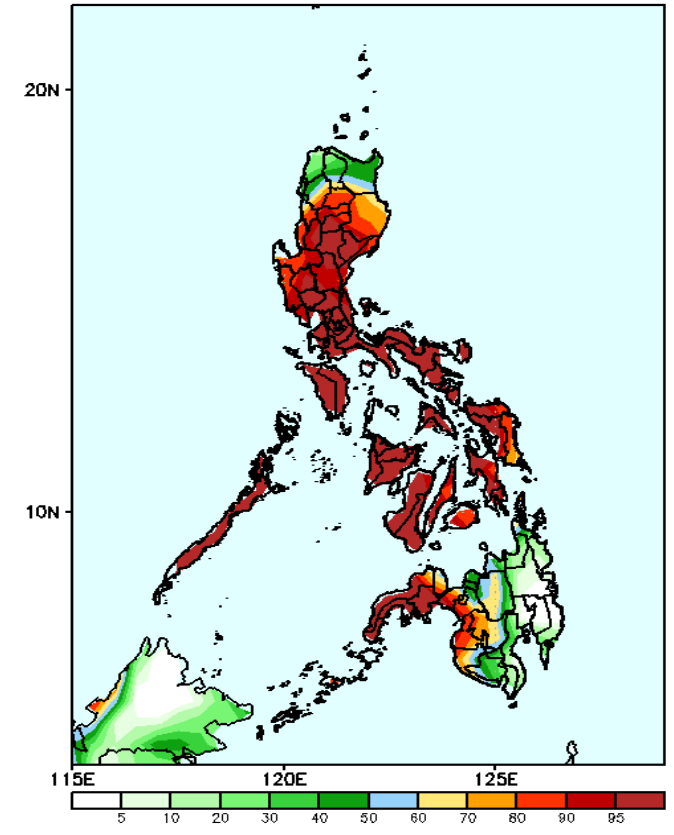
GEFS Week-1 Precip Anomaly  
Valid: 20240913 - 20240919



GEFS Week-1 Exceedance Prob. > 25mm  
Valid: 20240913 - 20240919



GEFS Week-1 Exceedance Prob. > 50mm  
Valid: 20240913 - 20240919



Increase of rainfall of more than 100mm is likely in most parts of Mindoro, Palawan, Quezon, Bicol Region and Visayas; 20-80mm in central Luzon and some areas in southern Luzon and western Mindanao.

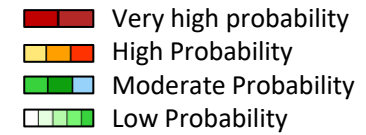
### Probability to Exceed 25mm

- High to very high over most parts of the country;
- Moderate to high over Eastern Mindanao.

### Probability to Exceed 50mm

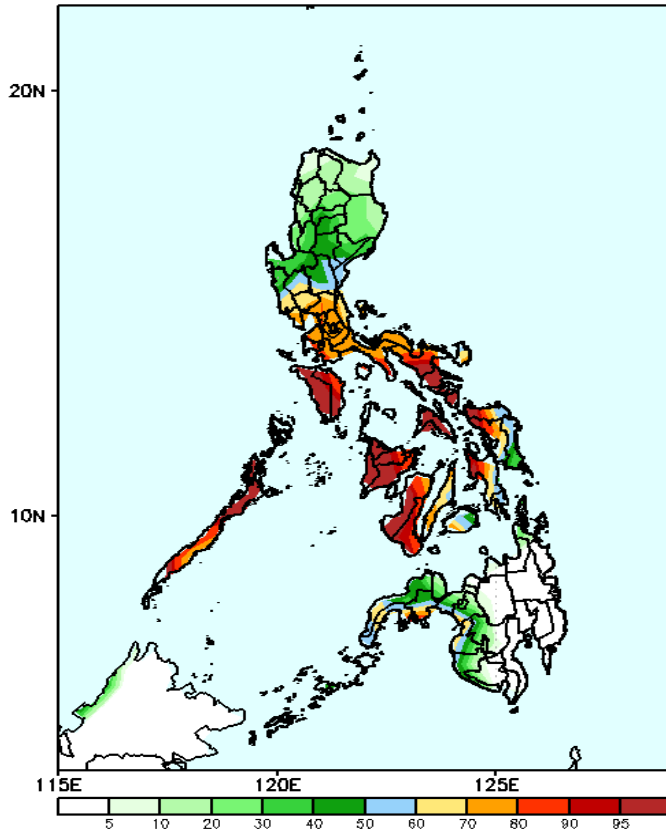
- High to very high over most parts of Luzon, Visayas, and Western Mindanao;
- Moderate to high over the northern part of Northern Luzon and Central Mindanao;
- Low to moderate over the rest of Mindanao.

# Exceedance Probability > 100/150/200 mm



## Week 1: Sep 13-19, 2024

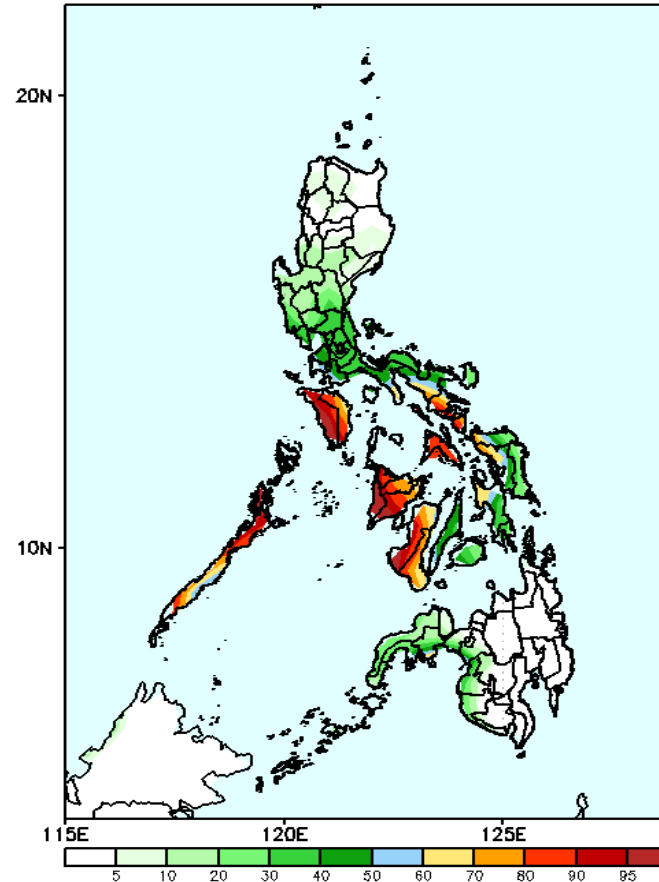
GEFS Week-1 Exceedance Prob. > 100mm  
Valid: 20240913 - 20240919



### Probability to Exceed 100mm

- High to very high over MIMAROPA, Albay, Sorsogon, Masbate, Western Visayas, and NIR;
- Moderate to high over NCR, most of Central Luzon, CALABARZON, the rest of Visayas, and most of Western Mindanao;
- Low to moderate over Northern Luzon and the rest of Mindanao.

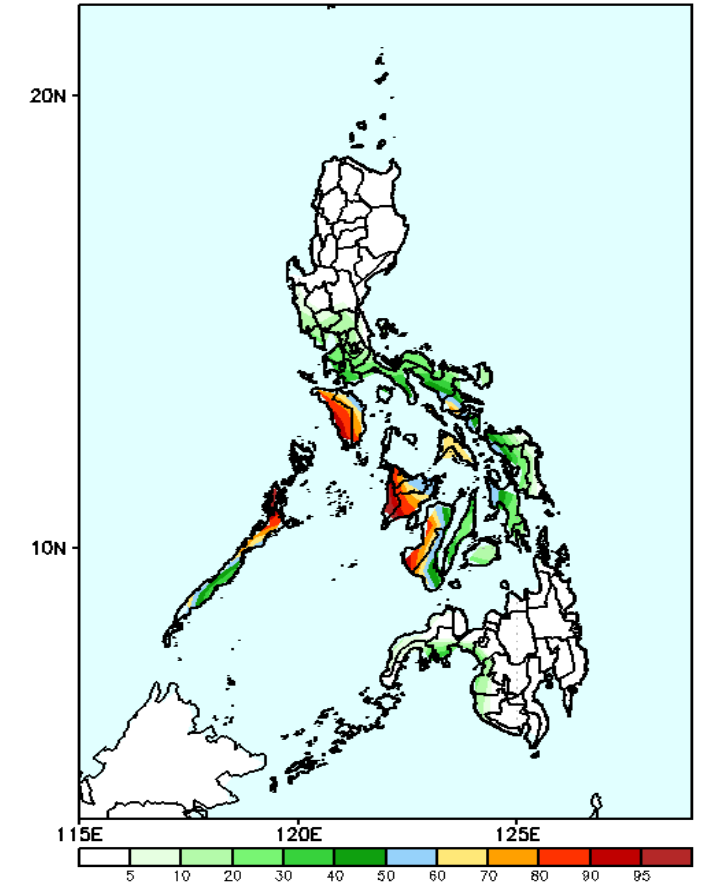
GEFS Week-1 Exceedance Prob. > 150mm  
Valid: 20240913 - 20240919



### Probability to Exceed 150mm

- Moderate to high over MIMAROPA, Albay, Sorsogon, Masbate, the southern part of Camarines Norte, western part of Batangas, Western Visayas, NIR, and western sections of Eastern Visayas;
- Low to moderate over NCR, the rest of Southern Luzon and Visayas, and Western Mindanao;
- Low over the rest of the country.

GEFS Week-1 Exceedance Prob. > 200mm  
Valid: 20240913 - 20240919



### Probability to Exceed 200mm

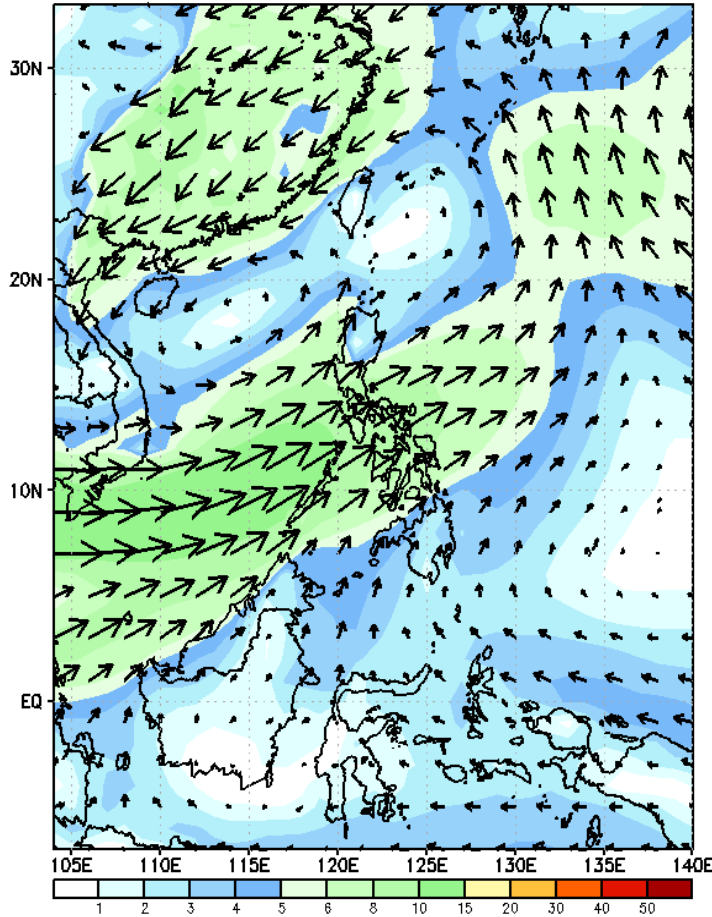
- Moderate to high over MIMAROPA, Sorsogon, Albay, Masbate, Western Visayas, and NIR;
- Low to moderate over CALABARZON, the rest of Bicol Region, and the rest of Visayas;
- Low over the rest of the country.



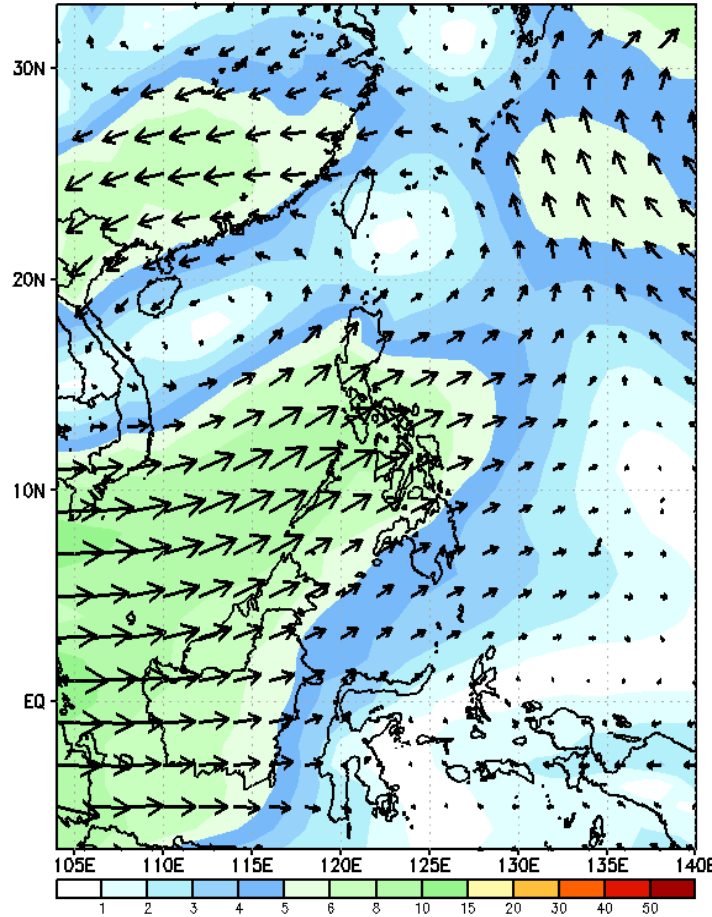
# GEFS Week-2 Wind Forecasts:

Week 2: Sep 20-26, 2024

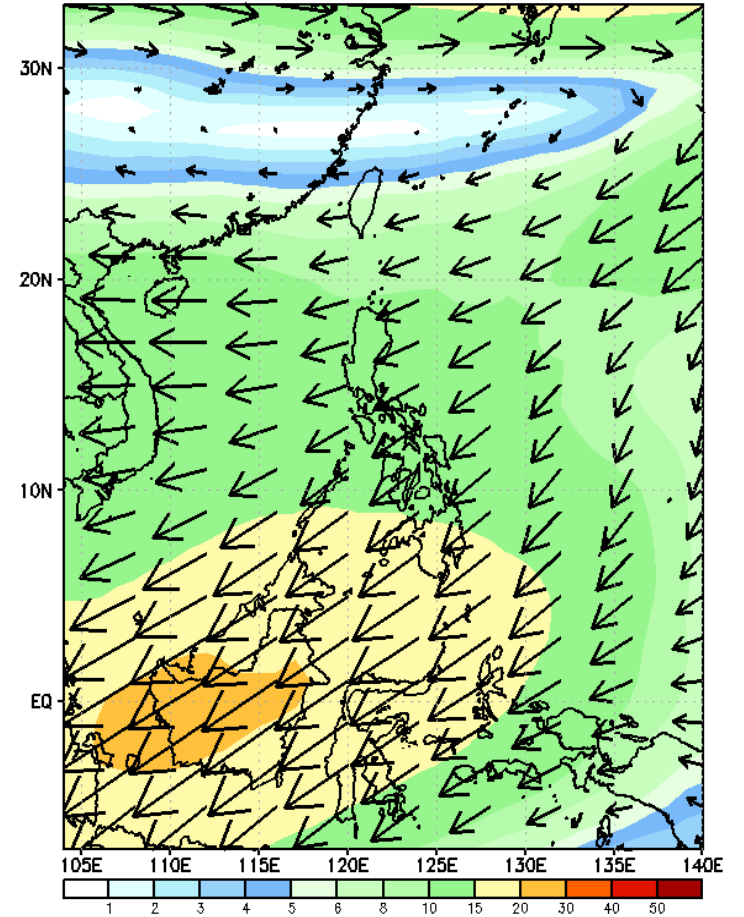
GEFS Week-2 850-hPa Wind Total  
Valid: 20240920 - 20240926



GEFS Week-2 700-hPa Wind Total  
Valid: 20240920 - 20240926

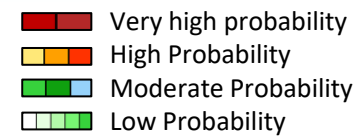


GEFS Week-2 200-hPa Wind Total  
Valid: 20240920 - 20240926



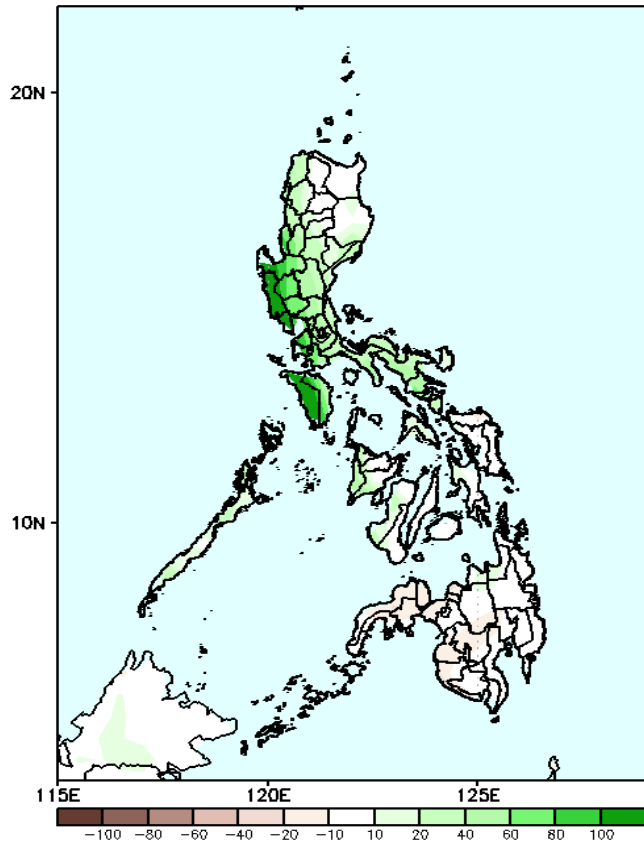
Weak Southwest Monsoon affecting most parts of the country.

# Precipitation Anomaly and Exceedance Probability > 25/50 mm



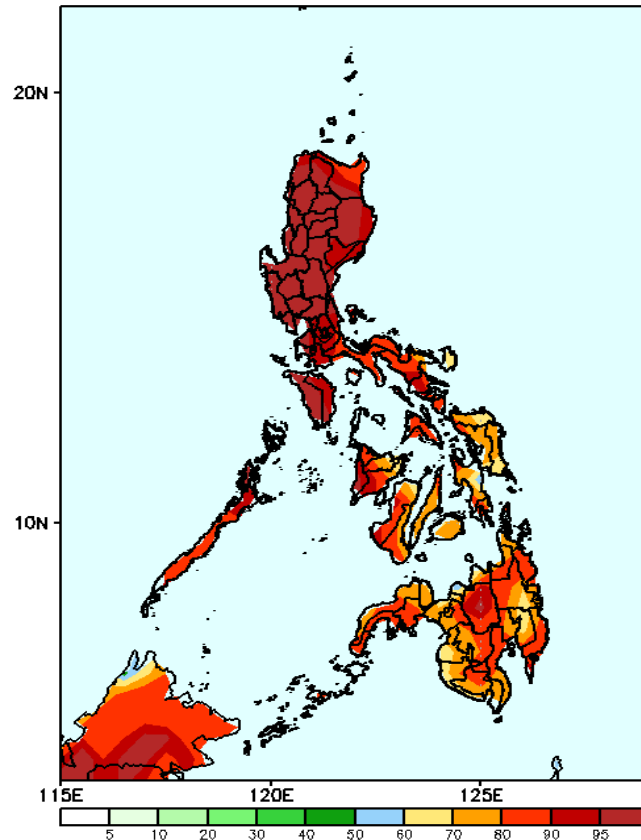
Week 2: Sep 20-26, 2024

GEFS Week-2 Precip Anomaly  
Valid: 20240920 - 20240926



Increase of rainfall of 70-100mm is likely in most parts of Central and Southern Luzon, and Antique; 20-60mm over the rest of Luzon and eastern Visayas.

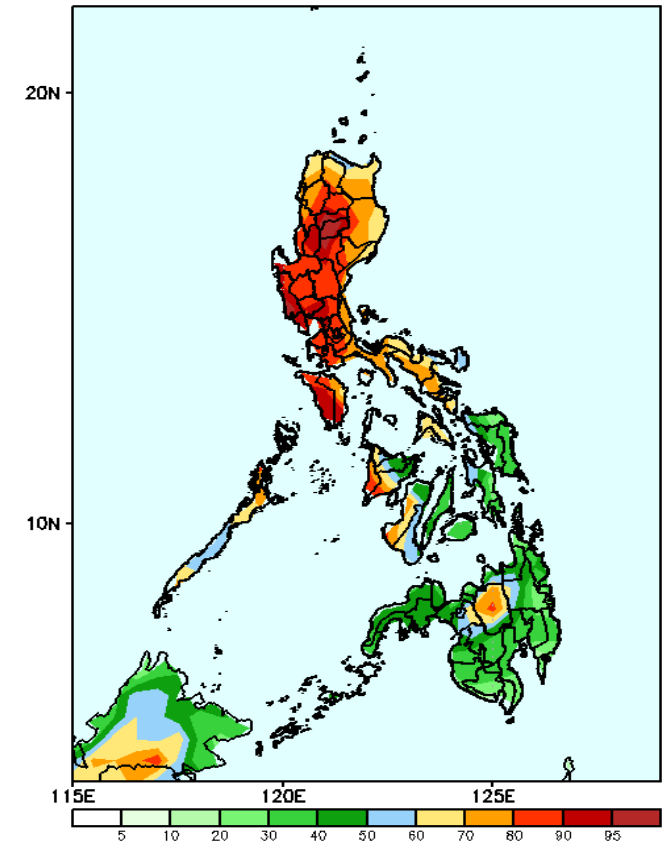
GEFS Week-2 Exceedance Prob. > 25mm  
Valid: 20240920 - 20240926



### Probability to Exceed 25mm

- High to very high most parts of the country

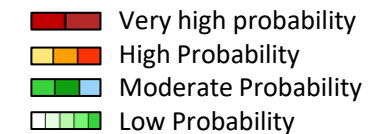
GEFS Week-2 Exceedance Prob. > 50mm  
Valid: 20240920 - 20240926



### Probability to Exceed 50mm

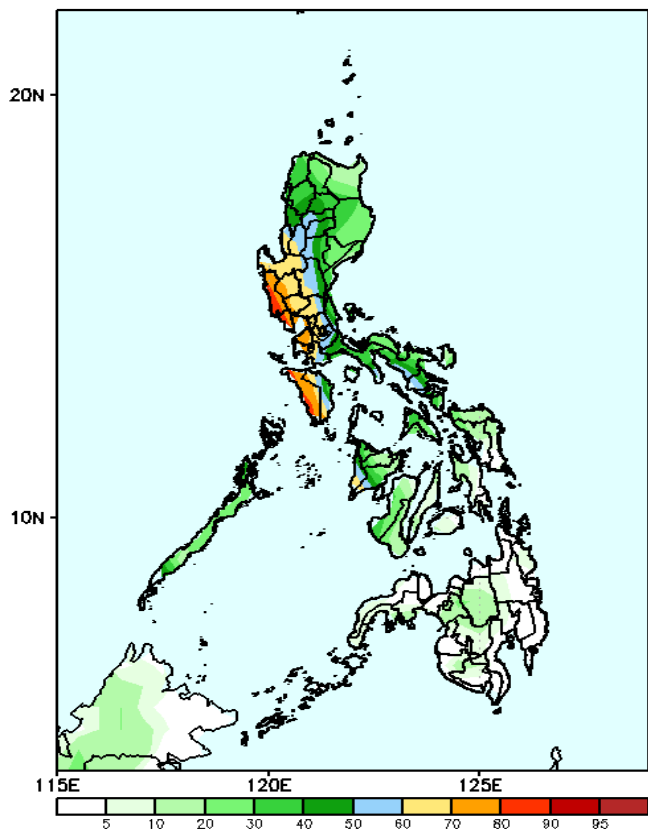
- High to very high over most of Luzon, Antique and the western part of Iloilo;
- Moderate to high over Southern Palawan, Bicol region, Aklan, NIR, and Northern Mindanao;
- Low to moderate over the rest over the rest of Mindanao.

# Exceedance Probability > 100/150/200 mm

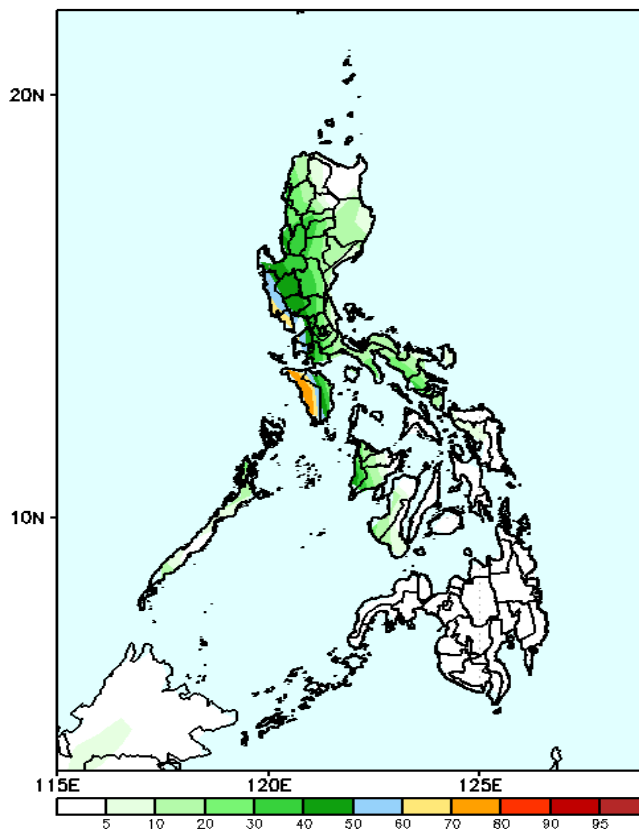


## Week 2: Sep 20-26, 2024

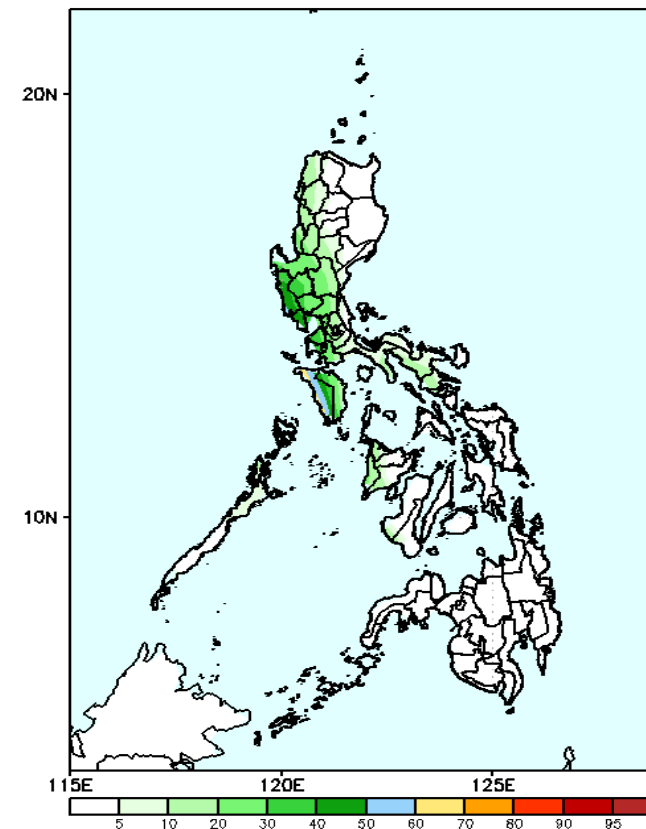
GEFS Week-2 Exceedance Prob. > 100mm  
Valid: 20240920 - 20240926



GEFS Week-2 Exceedance Prob. > 150mm  
Valid: 20240920 - 20240926



GEFS Week-2 Exceedance Prob. > 200mm  
Valid: 20240920 - 20240926



### Probability to Exceed 100mm

- High to very high over Zambales, Bataan and Mindoro Provinces;
- Moderate to high over La Union, Pangasinan, southern part of CAR, NCR, the rest of Central and Southern Luzon, Antique, and western part of Iloilo;
- Low to moderate over the rest of the country.

### Probability to Exceed 150mm

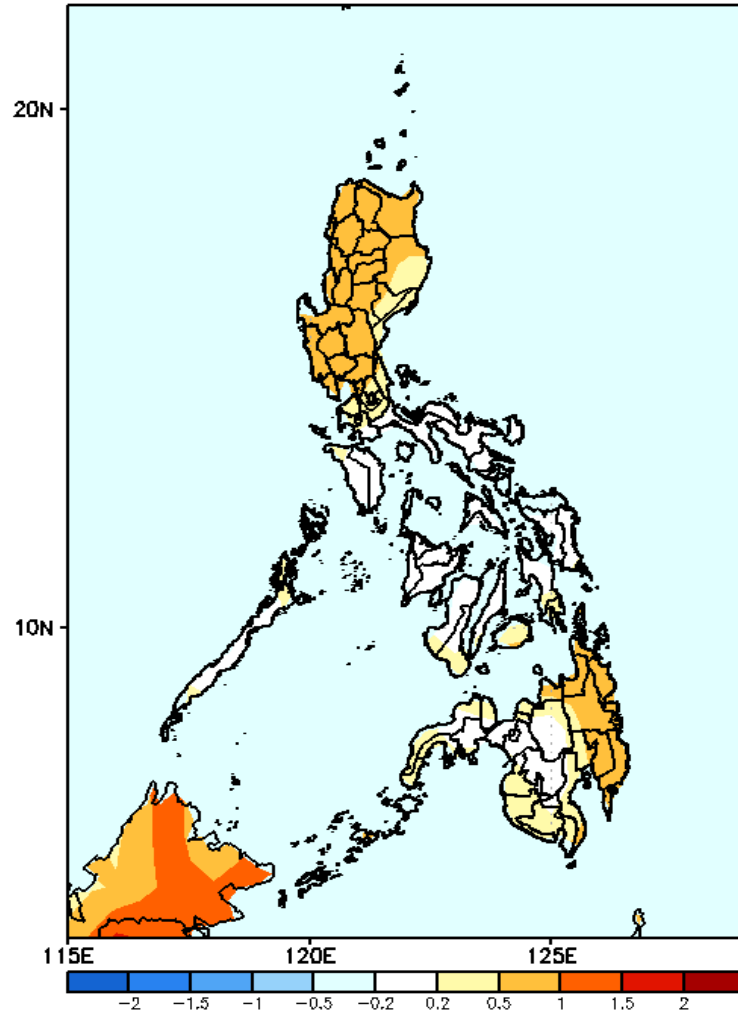
- Moderate to high over Zambales, Bataan, the western parts of Batangas, Cavite and Occidental Mindoro;
- Low to moderate over the rest of Luzon;
- Low over Visayas and Mindanao.

### Probability to Exceed 200mm

- Moderate to high over Occidental Mindoro;
- Low to moderate over the rest of Luzon;
- Low over Visayas and Mindanao.

# GEFS Week-1 & 2 Forecasts: T2m Anomaly

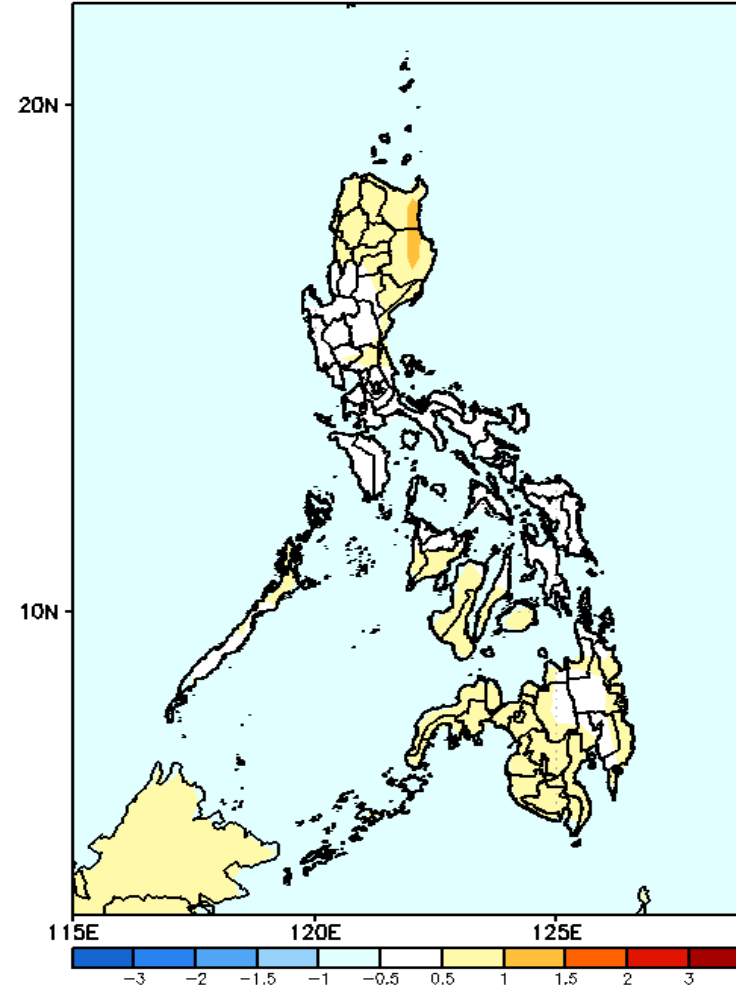
GEFS Week-1 T2m Anomaly  
Valid: 20240913 – 20240919



## 2m Temperature Week 1: Sep 13-19, 2024

Near to slightly warmer average surface air temperature will likely be experienced in most parts of the country.

GEFS Week-2 T2m Anomaly  
Valid: 20240920 – 20240926



## 2m Temperature Week 2: Sep 20-26, 2024

Near to slightly warmer average surface air temperature will likely be experienced in most parts of the country.

